



Rocky Mountain Woodturners

**Newsletter
January 2009**

www.woodturner.org

www.rmwt.org (updated!)

A Chapter of the American Association of Woodturners

We meet the Thursday after the first Tuesday of every month, 6:30 pm at the Loveland Woodcraft store. Using the I-25 exit 259 (Crossroads Blvd) east to St Cloud, south on St Cloud to Draft Horse Dr. to the mercantile building. Woodcraft is in The Mercantile building but not the store. Address is: 3718 Draft Horse Drive in Loveland, CO. Woodcraft ph# 970.292.5940.

January 8, 2009

Trent Bosch

Vessels of Illusion

In this demo participants will not only learn all the techniques that I go through in the creation of this body of work but how I developed it and why - making this much more than just a hollow form demo. This demonstration will include turning the outer hollow form, carving the vessel, turning the insert, using wood bending to get the insert in the outer vessel, and principals of wood bending for woodturners. Participants will walk away from this session with a lot of good solid technical information on tuning, carving, and wood bending, as well as how to come up with your own ideas and where to look for inspiration.

Election of Officers 2009

Final slate and installation

Everyone bring something – Gallery

We would like everyone to bring something for the gallery. It can be a work in progress, a first piece that you did, maybe first and last. It can even be a favorite tool or accessory. OK? OK!

Upcoming Demonstrators

Febuary 5, 2009

Megan Caine

Turning for Furniture

Meeting Format

6:00 – 6:30 – Setup and Social Time, come visit, share ideas and ask questions

6:30 – 7:00 – The general business meeting.

7:00 – 8:30 – Demonstrator time.

8:30 – 9:00 – Clean up and out by 9 pm sharp!

Dues are Due for 2009!

Members....\$40

Couples.....\$55

Students.....\$25

Dues may be given to Richard at the meetings or sent to Treasurer, Richard Bailey (12519 Locust Pl., Thornton, CO, 80602).

What's Happening in the RMWT?

RMWT Board Meeting

Reported by
John Giem

The Board for the Rocky Mountain Woodturners held a meeting the afternoon of January 2, 2009. All of the Officers were present and most of the committees were represented.

The next RMWT meeting will be Thursday, January 8, 2009, at which time the election of the Officers for 2009 will be held. The Officer nominations at this time are:

President– Drew Nichols

Vice President – Katherine Kowalski

Treasurer – Rich Bailey

Secretary/Newsletter Editor – John Giem

Additional nominations will be accepted from the floor at the meeting. The Chairman of the various committees will be appointed after the elections. The Educational Opportunity Grant (EOG) Committee reported that they have 6 or 7 applications for grants this year. Due to scheduling issues, not all of the committee members have been able to review the EOG applications for grants. Consequently, this year's grants will be delayed and will be awarded at the February meeting of the RMWT.

There was much discussion about what the goals of the Club should be for the coming year. Two of the goals established were to significantly improve the RMWT lending library and to bring in more 'Big Name' turners to present demonstrations. Further goals may be added later.

To achieve these goals, RMWT needs to increase the funds received to be able to pay for these demonstrators. We also need to make the job of keeping the funds of the resources separated. The decision was made to keep separate Bank accounts for the main Club funds, the EOG funds and the Symposium funds.

The yearly dues are being increased to help pay for bringing in 'Top Notch' turning demonstrators. The new fee structure is:

Members - \$40.00

Couple Members - \$55.00

Students - \$25.00

To further raise money to support our Demonstrators, we will be hold raffles at each meeting. We are asking Members to donate items to be raffled. These would include wood blanks, turned pieces, tools, etc. Methods of streamlining the raffle process were discussed.

We will start using name tags with the January meeting. This should help us improve our communications. John Giem will have name tags printed for all of the 2008 paid members. They will be available upon entering the meeting area. Please return them at the end of the meeting.

There was a lot of discussion about how to improve the Instant Gallery. No solid decisions have been made yet. Your suggestions will be welcome. Participation in the Instant Gallery is important to your growth as a Woodturner.

Hoyle Curtis has been doing a lot of work in improving the RMWT web site and getting it up to date, www.rmwt.org. Go check it out. Let Hoyle know what you think as well as any improvements you would like to see. The site also has a link to our Yahoo group. This is a great way to exchange ideas to learn and improve the Club.

RMWT Dec. Holiday Party

Pete Herman

The Holiday party was held on December 4th this year. Due to snowy and icy weather, attendance was lower than anticipated. For those that did brave the weather, it was a chance to reconnect with some familiar faces and meet some new ones. The facility was cozy and approximately 60

people were able to share the fare that everyone provided. Food assignments were alphabetical, and it seems there were more A-H's. For those of us with a sweet tooth, this worked out well, since they were responsible for desserts. A fine variety of food was available; hot and cold, vegetarian and meat dishes, side dishes and all of it was thoroughly enjoyed. I don't believe anyone went away hungry.

Because of the low attendance, there was talk of suspending the auction. This was short lived and while not all pieces were auctioned, over \$400 was raised for the club. The donors provided some beautiful pieces, from the humble to the intricate. Bidders outdid themselves and obtained some wonderful works.

In all, it seemed a fitting end to another successful year. This message was also conveyed by our president, Drew Nichols. Drew also put forth the challenge of how do we continue to grow and be more effective as a group and in our community. Good things to ponder as we move into a new year.

The Library is a Great Asset!

Are you taking advantage of your RMWT Library? We have a large selection of videos, and other reference materials. Dave Amos is in charge of the Library and is planning purchasing more material over the next year. Don't forget to check for information to use in your next project. Be sure to return the videos in a timely manner so that the next person can check them out. After all it is only common courtesy to your fellow RMWT member.

Attention Members!

Club members cannot sell videos or other items at Woodcraft during meetings. Woodcraft's sales tax license will not allow this. Any questions should be directed to Drew Nichols, our president.

Wood Storage Bank

As we have discussed before, we are collecting wood for our group. There are 3 of us collecting wood. They are Dave Amos, Bruce Pilkington and Kevin Dunn.

WOODCRAFT

Woodcraft does offer 10% discount to all members on RMWT Club meeting nights. Your membership card will get you a discount at several local turning supply retail stores. You can get your membership card from John Giem.

Learn from the best...

Our Club, RMWT, is becoming known around the nation because we have some of the best turners, nationally known demonstrators and best teachers of Basic Turning, Intermediate, and Advanced and Specialty turning right here in our own back yard.

Trent Bosch Woodturning Workshops

Workshops are held in Trent's studio in Fort Collins, Colorado. There is a maximum of four people in each class which allows for lots of individualized instruction. The cost is \$500 for the 3-day intensive workshop and \$650 for the 4-day. Meals are also provided at no extra charge. His studio is also equipped with the highest quality equipment available for your use. For detailed information on workshops visit www.trentbosch.com or contact Trent via email or phone.

Trent Bosch
Trent Bosch Studios Inc.
trent@trentbosch.com
970 568 3299

Lee Carter operates the **Rocky Mountain School of Woodturning** in LaPorte, Colorado. He offers classes in Basics, Intermediate and Advanced. Lee also offers private tutoring. 7 different brands of lathes are available. Call Lee Carter at 970-221-4382 to sign up or have him answer any questions.
e-mail LLJTC4X4149@CS.COM

Curt Theobald offers three-day workshops in Segmented Woodturning in his studio in Pine Bluffs, Wyoming.
Call Curt Theobald at 307.245.3310
E-mail cwtheobald@wyoming.com
Website is www.curttheobald.com

John Giem, Woodworker

Woodworking instruction customized to the needs of the student. Offering both woodworking on the lathe and combined with regular power tools. Classes are held in John's workshop in Fort Collins, CO, which is equipped with a complete set of woodworking tools. Contact John to discuss rates along with your interests and needs.

jgiem@comcast.net

(970)223-0844, home phone
(970)227-6618, cell phone

Woodcraft has classes for beginners in woodworking, shop safety, intro the machines, bowl turning, pen and pencil turning, hollow forms, Christmas tree ornaments, tool sharpening, etc. Please check out the class being offered at web page

www.woodcraft.com/stores/store.aspx?id=56

Wood Suppliers

Woodcraft

3718 Draft Horse Drive, Loveland
Woodcraft offers 10% to woodturners, on the night of the meeting. Discount applies to wood and equipment, excluding major power tools

10% Guild discount at the following:

The Wood Emporium

618 N Garfield Ave Loveland, Co 80537

Sears Trostel

1500 Riverside Ave Ft. Collins, CO 80524

Rockler's in Denver – You have to show your membership card.

2008 Officers, Directors and Committees

President: Drew Nichols

970-566-4662

dcnichols2004@msn.com

VP:

Treasurer: Richard Bailey

303-252-1405

Secretary / Newsletter: John Giem

970.223.0844

jgiem@comcast.net

Program Director: Trent Bosch

970.568.3299

trentbosch@yahoo.com

Librarian: David Amos

970.834.1432

dcjeamos@juno.com

Symposium Director

Mike Davis - mikeldavisllc@msn.com

Allen Jensen 970-663-1868

Rajconst@aol.com

Webmaster – Hoyle Curtis

hoyle.curtis@gmail.com

Lacer's Last Stand

Reported by: John I. Giem

On November 18, 2008, Curt Theobald hosted a demonstration in his shop in Pine Bluffs, Wyoming. The demonstrator, Alan Lacer, was celebrating the milestone of this demonstration, it marked his doing demos in all fifty states, hence, *Lacer's Last Stand*. (For those of you that didn't catch it, this is a take-off on General Custer's Last Stand.) In honor of the celebration, Curt presented Alan a giant cookie decorated with the image of a Skew. Curt cut the



cookie



with a skew, Alan's favorite tool.

Alan indicated that the skew is a very versatile tool when doing spindle turning and that you don't need little tools to make little turnings. To demonstrate this, he used his 1 3/8 inch skew to turn some very small tops. To make them easier to see and pass around, they were placed on the sticky side of a piece of black electrical tape. No one present, volunteered to test spin the tops. Note that there are two tops in the photo.



Alan used the skew for most of the turning done during the evening. I don't remember his using the grinder for



sharpening, instead, he honed his tools using a Diamond Hone.

Next, Alan demonstrated the turning of an egg using only a skew. One of the interesting aspects of this project was how he mounted the wood to do the turning. He had turned a Morris taper on the end of the blank and drove it into the spindle. (More on this technique below.)



When laying out and working on his turnings, Alan prefers to use an awl instead of a pencil, it is more accurate and seldom needs sharpening. He makes his own using an un-tempered 1/4 inch O1 steel drill rod. After cutting the rod to length, he shapes the point by chucking it into a drill and grinding it on a faceplate covered with Norzon, a product made by Norton.

After the drill rod was shaped, it needed to be tempered. The rod was held in the flame of a propane torch and heated along the entire length of the tapered section. It was heated until it was a bright cherry red along the entire length of the tapered section. It was then rapidly quenched (cooled) in a container of extra virgin olive oil. It was moved around in the oil in a stirring action while cooling. At this time, the steel should be very hard. This can be verified by trying to cut it with a metal cutting file. The file should just slide over the rod without cutting it. Even though the steel is now very hard, it is also very brittle (not ductile) and could be easily broken in usage.

To improve the ductility and maintain the desired hardness, the end of the drill rod must be heated to a temperature of 450 degrees F and then quenched in water. Alan described three different ways to accomplish this tempering.

1. Heat the drill rod in an oven set to 450, let it stabilize at temperature and then quench in water.
2. Get a Temilstick, a special wax formulated to melt at 450 degrees, available at a welding supply store. in usage, use the propane torch to heat the drill rod at the base of the taper letting the heat slowly migrate up to the sharp tip. When the tip reaches the desired temperature, it will melt the Temilstick. When this happens, rapidly quench the rod in water.

3. The method Alan used in the demo relied upon the color changes in the steel as its temperature changes. He started by cleaning the scale off of the tip so that the steel was shiny and its color could be observed. The propane torch was used to heat the rod at the base of the taper allowing the heat to migrate down toward the tip. The color of the steel at the tip was monitored indicating its temperature. When the tip reached a straw or yellow color, the steel was quenched in water. Alan likes the patina coloring of the steel at this point and does not polish it off but uses it as is. Using Osage orange, he turned a handle for the awl.



The unique feature of his handle was the ferrule. He used a brass nut used for copper flange tubing that can be obtained from most hardware stores. The nut has flats on one end for usage with a wrench and tapers down to the tubing size on the other. He turned a tenon on the end of the handle sized such that he could utilize the internal threads of the nut to screw it onto the tenon. Once the ferrule was on the handle, he used his skew to clean up and shape the nut by turning off its flats. (Yes, if you are careful, woodturning tools can be used to turn brass.) Using a chuck in the tailstock, a hole was drilled through the ferrule into the handle for mounting the drill rod. The finalized the awl was passed around for all to admire.

Alan mentioned that he has a new video on making turning tools using resources commonly available to Woodturners. Apparently, it is not yet available on the retail market but I verified that it is available on his website, www.alanlacer.com. [Dave Amos is planning on ordering a copy of the DVD for the RMWT Library.]

A new lathe accessory for turning oval objects was briefly demonstrated by Alan. It was designed in Germany and is being manufactured and distributed by Vicmarc out of Australia.

It is a very interesting unit and will allow the Woodturner a new dimension in his craft.

During the discussion that followed the demo, Alan's article on 'Scraper Sharpness' in the Winter 2008 issue of the **American Woodturner** was discussed. The information in that article is quite useful. (I found that it has improved my usage of my scrapers due to better sharpening techniques.)

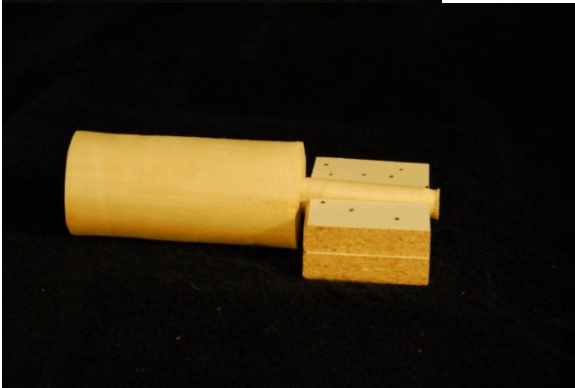
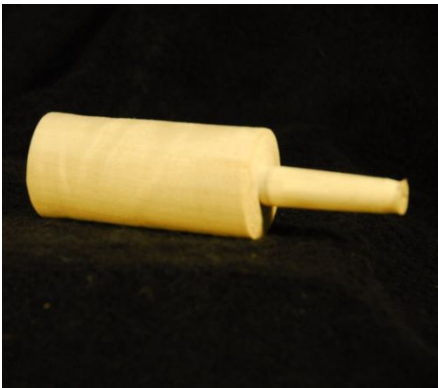
Turning a Morris taper on turning blank.

As mentioned above, Alan turns a Morris taper on the end of the blanks used for turning small objects. (see photo about the egg above) This works better than holding the blank in a chuck. To assist in turning the Morris taper, Alan made a small fixture to use as a gauge when making the taper. Using his regular spur drive with its Morris taper, he inserted it into the headstock and marked how far it went into the spindle. He then placed it on a small block of wood and attached two strips of wood, one of each side of the spur drive. He indicated that one should leave the fit 'loose' between the spur drives Morris taper and the side strips.

In usage, you want your wooden Morris taper to have a tight fit in the spindle to prevent turning but it should also be sized such that when tapped tight that the shoulder of the wood blank, at the top of the taper, should be tight against the end of the spindle. This will provide additional support and minimize the risk of the Morris taper breaking off during usage. (This is similar to making the shoulder of your tenon fit tight against the ends of the jaws when mounted in a chuck.)

My Experience: Using Alan's instructions, I built a gauge and turned a Morris taper tenon on the end of a turning blank. The first photo shows the spur center marking its insertion depth into the spindle. Second, shows the gauge fitted to the spur center pattern. The third and fourth, show the Morris taper on the end of the turning blank and fitted into the gauge.

2. The 'looseness' of the gauge fit to the spur center pattern is a little sensitive. Small changes of diameter of the turned Morris taper makes big changes in the depth of insertion into the spindle. Remember that you want to achieve a tight fit into the spindle and at the same time that the shoulder contacts the end of the spindle.



3. Wood moves! When I originally turned the above wood blank, the taper fit snugly into the spindle. I could not pull it out by hand and had to use a rod to drive it out (just like the spur center). When I came back a couple of days later, the Morris taper on the same turning blank was a very loose fit and unusable. In order to use it, I would need to bulk it out, perhaps with masking tape.

Recommendation: Wait and turn your Morris taper near the time when you will be using it to avoid undesired dimensional changes.

Observations:

1. The by making the taper on the wood blank a little long, the gauge can be used to size the taper without removing the blank from the lathe.