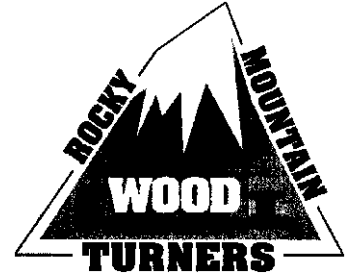




**Rocky Mountain Woodturners**  
*A chapter of the American Association of  
Woodturners*  
**November 2011 Newsletter**



### **Contents of Newsletter**

- Next RMWT Meeting, Demonstrator
- RMWT activities
- Announcements
- October 2011 demonstration
- RMWT information, Member's web sites, sources of woodturning Instruction and discounts.

### **Next RMWT Meeting**

The next meeting of the Rocky Mountain Woodturners will be Thursday, November 3. Please note that this meeting is at a new location, the McKee Building at the Ranch. The meeting will start at 6:30 PM as usual.

For November we have David Nittmann doing "basket illusion". David will show all his treatment of how he creates the woven look and will concentrate on a detailed explanation of the cutting technique he uses to effect the "beads". The burning and coloring technique will also be discussed. A short discussion of design evolution will conclude the presentation.

### **History of a Spider Logo, David Nittmann**

Circa 1970 I worked as a Union carpenter around Denver, Colorado. Not fearing "high-wire" work, one of my jobs was to build scaffolding for the Ironworkers, most of whom were Chicanos. They would see me climbing around the works and called me Arana-the spider. In those days each workman had to supply their own hand-tools: hammers, square, tape measure, handsaw, peashooter, chalk line, plumb bob, et al. As a method of keeping track of one's own tools, workers picked various colors of paint and put a small dot on each tool for personal identification. I, however, being "Arana", drew a stylized spider on my tools for identification-two circles and eight lines. Today I sign off, as the last gesture, this logo on each piece of art work that I create.

### **RMWT Activities**

#### **RMWT Board Meeting**

**John I. Giem**

The RMWT Board meeting was held at 7:00 PM on November 10, 2011, at the Wild Boar. Present were Pete Herman, Drew Nichols, Frank Amigo, John Giem, Allen Jensen and David Nittmann.

The annual RMWT Christmas Party and Banquet was discussed.

- The Party will be held on December 8, 2011 with RMWT paying for all food and non-alcoholic drinks.
- Suggested that attendees, if possible, bring their own plates that they have turned, otherwise all dinnerware will be provided.
- David Nittmann told us that his son ( catered the meet at last years party) manages a restaurant in Fort Collins. David will check on possibly having the party at his restaurant.
- As many details as possible will be presented at the November meeting.

It was suggested that we find a different location for future RMWT Board Meetings. This suggestion was prompted by parking problems and noise issues. Pete will look into it.

At the last RMWT meeting, due to confusion with the new meeting location, we used Cindy Drozda's video projector during the demonstration. The usage of the video projector is viewed as a success. The discussion on using a video projector during future meetings brought up several advantages with using the projector.. We will ask the appropriate Committee to look into the feasibility and costs of using video projectors instead of TV Monitors for the RMWT meetings.

For the present, it looks like we will conduct future RMWT meetings at the Ranch. If we can schedule things correctly, it looks like we can use some of the facilities at the Ranch at a very reasonable expense. Pete will contact the AAW and arrange for the appropriate insurance for the meetings as required by the Ranch. The logistics for handling the Powermatic to and from the meeting are smoothing out so for the present we will be using the Powermatic at the monthly meetings for the demonstrations. The monthly wood raffle will continue.

David Nittmann was asked to continue as Program Director for 2012, he accepted. David went over the preliminary schedule of demonstrations for 2012. The preliminary schedule looks exciting and will provide a lot of good information. In an effort to develop the talent within RMWT, he as recruited several of our members, who have never demonstrated before, to make presentations. The current fee schedule for demonstrations is \$150 for local, non-professionals, \$200 and up for professional demonstrators. David presented a budget request of \$6500 for the 2012 demonstrations. He is trying to schedule a couple of workshops and classes to be held while the Demonstrators are here. We may be able to recover some funds which would reduce the overall expense to RMWT. I have a partial list of demonstrators to be published in the Newsletter and posted on our web site.

The election of officers is to be held at the January 2012 meeting. Pete will be forming a nominating committee to present a slate of officers at the meeting. Additional nominations can be made by the membership at the meeting.

The RMWT pays the AAW dues for the RMWT Officers since AAW membership is required for the Officers. All Officers and potential Officers are to pay their AAW dues and then the RMWT will reimburse them as appropriate.

A motion was made and discussed regarding RMWT paying the AAW dues for the Primary RMWT Symposium Coordinator. The Board agreed that this would be an acceptable expense and will refer it to a vote of the Membership for approval during a regular meeting.

It was proposed some time back that we should consider revising the RMWT Logo. To help move toward closure, copies of all of the proposed logos will be scanned and published in the RMWT Newsletter for the Membership to review. A vote by the Membership will determine whether to retain the present logo or adopt a new logo. The date has not been set for a vote. Frank Amigo, Drew Nichols and David Nittmann are to provide copies of the different logos to the Editor of the Newsletter for publication.

The meeting adjourned at 9:15 PM.

### **Treasurer's Report**

The following report was submitted to the Newsletter by Frank Amigo.

#### **Rocky Mountain WT Financial Statement July thru Sep 2011**

Credits	Debits
221.00 Raffles	1200.00 Demos
495.00 Dues	763.96 Tripods
356.00 wood sale	145.00 Symposium account*
72.00 sealer	450.00 Dixie Biggs class*
30.00 auction	2790.00 EOG
<hr/>	30.40 AAW 25th anniv. book
1769.00 total	103.98 wood bank expenses
13512.07 balance 6/30/11	478.59 Sealtite
<hr/>	<hr/>
15281.07	5961.93 total
- 5961.93 debits	

---

9319.14 balance 9/30/11 checking account

balance savings account 1011.53

### **Wood Bank**

We have a new barrel of Steatite 30 Wood Sealer. Due to increasing costs, we are letting Members have sealer at \$11 per gallon, our cost. The Members must supply their own containers. Pete talked to the vendor about our problems with the sealer gelling and getting thick. We were told to add some hot water to the gelled sealer and mix it up with a drill mounted paint mixer.

With this latest snow storm, did any of you have a power outage and get cold wishing you had some wood for that fireplace? If so, then we have a deal for you. The Wood Bank has a large amount of **fire wood** for your winter comfort at no cost. If you can use some fire wood, please come and get it and build up a reserve for that next storm. This **free fire wood** is not restricted to RMWT Members only, so bring your friends and neighbors with you and help make room for fresh turning wood.

Currently the Wood Bank has a good selection of wood, the varieties change frequently. Call John Giem to arrange a time to come by pickup your wood. Remember, John can cut the wood for you if you do not have a chainsaw.

If you have a lead on possible wood for the Wood Bank, call Vince Wilson, Jerry Sherman, or John Giem (Contact information below)

A set of guidelines are being developed by Jerry Sherman and John Giem for the Wood Bank. These Guidelines are intended to promote safety, to help keep the wood lot clean and need and to reduce the efforts need to maintain the Wood Bank. When finished, a copy of the guidelines will be posted at the wood lot and in the Newsletter.

### **Announcements**

Wood turning demo - Bill Filson brought to my attention a video demonstrating how to effectively utilize the skew chisel. Viewing this demo may be hazardous to your pocket book.  
<http://www.wimp.com/chesspieces/>

I asked David Nittmann if we could have him do a demonstration for us. David doesn't think that we could afford him.

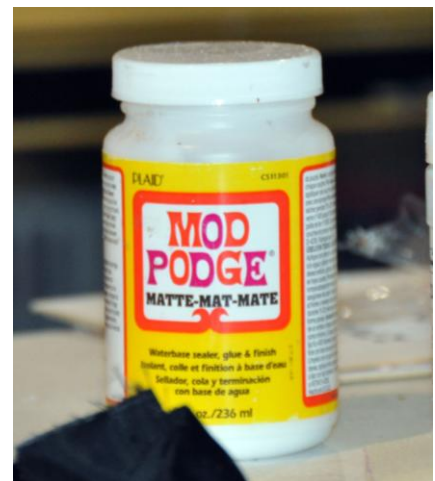
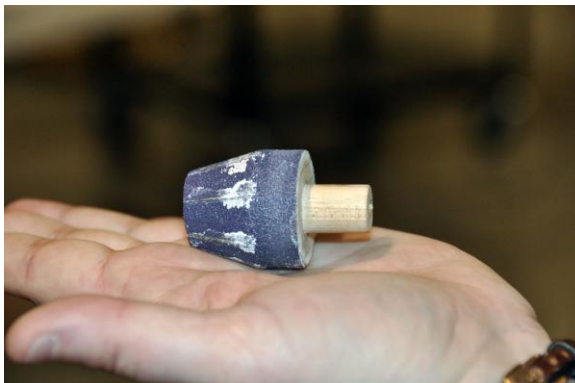
# Cindy Drozda

## Gilded Sea Urchin Ornament

John I. Giem  
October 6, 2011

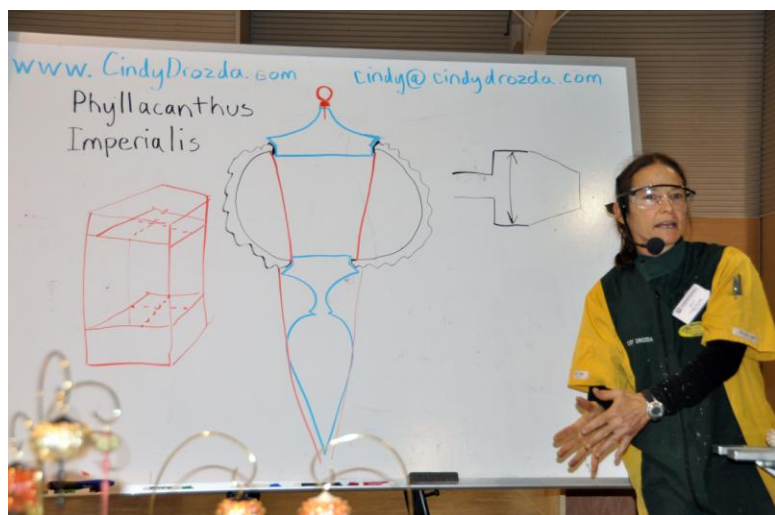
Cindy Drozda demonstrated how to make a gilded sea urchin ornament to the Rocky Mountain Woodturners at their regular meeting on October 6, 2001. During her demo she was able to take an intimidating project and explain all the little tricks and techniques and made them understandable and interesting.

- There are many different types of sea urchins available, all of which can be fragile and easily broken. They cannot be cut with a cutting tool without breakage but they can be sized with abrasive tools.
- If it is broken it can be glued together easily.
- It is easier to start with the larger sizes in that the finials can be larger and easier to turn.
- Start by coating the inside with Mod Podge to strengthen against breakage. If the outside going to be gilded, then also coat the outside with Mod Podge.
- The top and bottom openings need to be shaped round and sized for mounting the finials. Make mandrels for top and bottom, appropriately sized for the tenons of the finials. The front surface should be tapered. Epoxy sandpaper on the mandrels. Hold the sandpaper in place with tape until set.



- The mandrels are mounted on the lathe then the sea urchin is slowly fed onto it. Remember the outer diameter of the mandrel is sized for the tenon.

- Use a similar tapered cone to clean up the roughness around the openings to minimize gaps between the body and the cap or finial. The finial and cap must also be tapered to match the tapers in their respective mounting holes..
- A fine wire brush is used to clean up the edges around the holes.
- Caliper the top opening, the larger of the two holes, and make a top cap to fit. She used American Holly to achieve the color and texture desired. In general, use a close grain hardwood for the finials. The inside of the top cap is hollowed out to reduce the weight.
- She uses 2 inch square blanks for projects like this. The length, about 6 inches, is such that she can cut off the two ends for caps and the center section is cut lengthwise in quarters to be used as finials.
- Wanting the holly to retain the white color, she finishes these finials with lacquer and wax. Oil finishes will darken the wood.
- Regarding CA glue, it is OK in some cases but she does not want to use it in locations where it will be in the final product. [Note: CA glue has a reputation for becoming brittle over time and releasing or cracking. Jig]
- She has a set of disks turned to the appropriate sizes to use as templates for setting her calipers.
- Wonder size was brushed onto the exterior of the urchin being careful to get in and around all of the bumps and other irregularities. The size will stay tacky and will hold the gilding foil onto the urchin. The urchin was set aside to let the size age before the foil application.
- There is a wide variety of acceptable body and finial lengths. Cindy explained the design guidelines for sizing and shaping the finials. The bottom finial is about twice as long as the urchin. When the eye draws a line from the top cap down to the bottom finial, they line up and form a triangle shape.
- Mount the finial blank in the scroll chuck and rough it down. Leave plenty of mass at this time to provide proper support while turning.



- For Finial Success:
  - + do not use the tailstock, the live center may damage the end of the blank and it could force the blank off center.
  - + Always work on well supported stock, well mounted in the chuck and supported by hand when needed.
  - + When shaping the finial, always backup and support it. Utilize your fingers on the backside to provide the needed support. If your fingers get hot, then you are being too aggressive [this forces you to make light delicate cuts.]
- Begin shaping at the end of the finial, cut, shape and sand it as you move back toward the chuck. Only reduce the support for a section after it is finished. The finials are delicate and you may not be able to go back and work on it more, it is not strong enough to resist breakage.
- The best finials are not accidental or just happen, they are created through design and many trials to get just the right balance of shape and size. There is very intentional placement of each detail, the proportions, height shape and width to complement the size and shape of the sea urchin.
- After the finial was finished, the size had aged and tacky, it was ready to apply the gilding.
- She prepared the material for gilding by laying down a sheet of stretch wrap (get it at an office supply, used for packaging and shipping.) followed by two sheets of gilding foil. The foil is placed best side down with the best figured foil being laid down last.
- Why two sheets of foil? When the foil is wrapped around the urchin, the rough texture will break through the first layer of foil. The second layer will then adhere to the size covered protrusions giving complete covering of the surface.
- With a holder (used as a handle) inserted into the urchin, the urchin was placed in the center of the plastic and foil layers. By lifting up the plastic stretch wrap, the plastic and foil were brought up and around the urchin with its sticky size. Using a sheet of foam to help, the plastic and foil were pressed down against the surface in and around the texture. The plastic stretch wrap holds everything together and yet allows pressure to be transferred to the foil. After she does as much as can be done by hand, she used a stippling brush to further tap the foil down into the textured surface.





- After the size has dried, remove the plastic wrap and brush off the excess foil. The foil is soft and prone to scratching so be careful. Use a very soft brush or velvet to clean up the foil.
- One must prioritize the order of final assembly of the parts. Since the cap will be carrying the most weight, it will be attached first so that it can easily be given extra epoxy and hopefully a stronger joint.
- Epoxy is used to fix the screw eye in the top of the cap and set it aside to set up. The cap is epoxied into the top of the sea urchin. She applied epoxy to the tenon of the finial, inserted it into its hole and then used a brush through the bottom hole to apply to put extra epoxy around the seam where the cap meets the sea urchin. Using a hollow stand, the sea urchin/cap assembly was placed upside down while the epoxy cured. By placing the assembly upside down, the epoxy will puddle around the seam making it stronger instead of running all over the place and making a mess.
- After the epoxy for the cap was cured, it was time to attach the bottom finial. Epoxy was



placed around the tenon being careful to not get epoxy on the outside exposed surfaces. Extra epoxy was globed onto the inner surface around the bottom hole. The finial was inserted and placed in a stand to hold it upright.

- The excess internal epoxy will run down and over the lower joint within the urchin and the finial providing additional strength to the joint.
- After the epoxy has cured, the ornament is ready for display.



- Cindy's web site has a complete the complete materials list for this project.



---

## RMWT Meetings and information

President: Pete Herman  
(970) 663-1951 home  
(585) 259-9486 mobile  
[Peter\\_Herman@comcast.net](mailto:Peter_Herman@comcast.net)

Vice President: Drew Nichols  
Shop Tours  
(970) 566-4662 home  
(970) 224-4850 mobile  
[dcnichols2004@msn.com](mailto:dcnichols2004@msn.com)

Treasurer: Frank Amigo  
[efamigo@msn.com](mailto:efamigo@msn.com)

Secretary & Newsletter: John Giem  
970 223-0844 home  
970 227-6618 mobile  
[jgiem@comcast.net](mailto:jgiem@comcast.net)

Wood Bank  
John Giem, Chairman and Wood Lot  
Manager  
(see above)

Vince Wilson, Scout & Liaison with Tree  
Surgeons, (970) 430-0961,  
[vwildonco@msn.com](mailto:vwildonco@msn.com)

Jerry Sherman, Collection  
(970) 631-2984 mobile  
(970) 484-2619 home

RMWT Program Director  
David Nittmann  
303 579-6744  
[david@davidnittmann.com](mailto:david@davidnittmann.com)

RMWT Webmaster: Hoyle Curtis  
[Hoyle.curtis@gmail.com](mailto:Hoyle.curtis@gmail.com)

## RMWT Symposium

General Coordinator: Allen Jensen  
970 663-1868 work  
970 776-6452 mobile

Vendor Coordinator: Mide Davis  
[Mikeldaviasllc@msn.com](mailto:Mikeldaviasllc@msn.com),

Program Coordinator: Trent Bosch  
[trent@trentbosch.com](mailto:trent@trentbosch.com)

Registration Coordinator: John Giem  
970 223-0844 -- home  
970 227-6618 -- mobile  
[jgiem@comcast.net](mailto:jgiem@comcast.net)

---

## 10% Guild discount

Wood Emporium  
618 N Garfield Ave Loveland,

Sears Trostel  
1500 Riverside Ave  
Ft. Collins, CO 80524

Rockler's in Denver – You have to show  
your membership card.

---

## Clubs and Member's Websites

Rocky Mountain Wood Turners  
[www.rmwt.org](http://www.rmwt.org)

AAW – American Assoc of Woodturners  
[www.woodturner.org](http://www.woodturner.org)

Trent Bosch  
[www.trentbosch.com](http://www.trentbosch.com)

David Nittmann  
[www.davidnittmann.com](http://www.davidnittmann.com)

Cindy Drozda  
[www.cindydrozda.com](http://www.cindydrozda.com)

John Lynch  
[www.johnlynchwoodworking.com](http://www.johnlynchwoodworking.com)

Curt Theobald  
[www.curttheobald.com](http://www.curttheobald.com)

Katherine Kowalski  
[www.KatherineKowalski.com](http://www.KatherineKowalski.com)

Want your Website Listed? Contact John Giem, Editor.

---

### Learn From the Best...

Our Club, RMWT, is known around the nation because we have some of the best turners, nationally known demonstrators and best teachers of Basic, Intermediate, Advanced and Specialty turning right here in our own back yard.

### **Trent Bosch Woodturning Workshops**

Workshops are held in Trent's studio in Fort Collins, Colorado. There is a maximum of four people in each class, which allows for lots of individualized instruction. The cost is \$500 for the 3-day intensive workshop and \$650 for the 4-day. Meals are also provided at no extra charge. His studio is also equipped with the highest quality equipment available for your use. For detailed information on workshops visit [www.trentbosch.com](http://www.trentbosch.com) or contact Trent via email or phone.

Trent Bosch  
Trent Bosch Studios Inc.  
[trent@trentbosch.com](mailto:trent@trentbosch.com)  
970 568 3299

---

**Lee Carter** operates the **Rocky Mountain School of Woodturning** in LaPorte, Colorado. He offers classes in Basics, Intermediate and Advanced. Lee also offers private tutoring. Seven different brands of lathes are available. Call Lee Carter at 970-221-4382 to sign up or have him answer any questions. e-mail [LLJTC4X4149@CS.COM](mailto:LLJTC4X4149@CS.COM)

**Curt Theobald** offers three-day workshops in Segmented Woodturning in his studio in Pine Bluffs, Wyoming. Call Curt Theobald at 307.245.3310 E-mail [cwtheobald@wyoming.com](mailto:cwtheobald@wyoming.com) Website is [www.curttheobald.com](http://www.curttheobald.com)

---

### **John Giem, Woodturner**

Individual or small group woodworking instruction customized to the needs of the student. Offering both woodworking on the lathe and combined with regular power tools. Classes are held in John's studio in Fort Collins, CO, which is equipped with a complete set of woodworking tools. Contact John to discuss your interests and needs.

[jgiem@comcast.net](mailto:jgiem@comcast.net)

(970)223-0844, home phone

(970)227-6618, cell phone

---

**Katherine Kowalski** is a Woodturner & Contemporary Artist, offering private/small group instruction in woodturning technique, as well as specialized classes in hollow forms, bowl, fine spindlework, and color theory/technique. (All levels of instruction are available). Classes are held at Katherine's studio in Cheyenne, WY. Email: [katherine@daystarhandworks.com](mailto:katherine@daystarhandworks.com) Cell Phone: 307 220-0130 Web site: [www.katherinekowalski.com](http://www.katherinekowalski.com)

**Woodcraft** has classes for beginners in woodworking, shop safety, intro the

machines, bowl turning, pen and pencil turning, hollow forms, Christmas tree ornaments, tool sharpening, etc. Please check out the classes being offered at web page

[www.woodcraft.com/stores/store.aspx?id=56](http://www.woodcraft.com/stores/store.aspx?id=56)